

Blues for a Grey Day

George Klos
©1992

Lento ♩ = 126

1 5 3 3 1 2 1

p

5

ped sim...

1 3 2

1

3 2

3 5 4 3
1 3 2 1

mp

3 5 4 3

1 3 2 1

1 5

mf

1 5

1 3 2 1

mp

This system contains measures 1 through 4. The treble clef part begins with a half note G4, followed by quarter notes A4, B4, and C5. The bass clef part consists of a steady eighth-note accompaniment. Fingerings are indicated as 1, 3, 2, 1 for the treble clef notes.

2 1 2 3

mf

This system contains measures 5 through 8. The treble clef part continues with quarter notes D5, E5, F5, and G5. The bass clef part continues with eighth notes. Fingerings are indicated as 2, 1, 2, 3 for the treble clef notes.

1

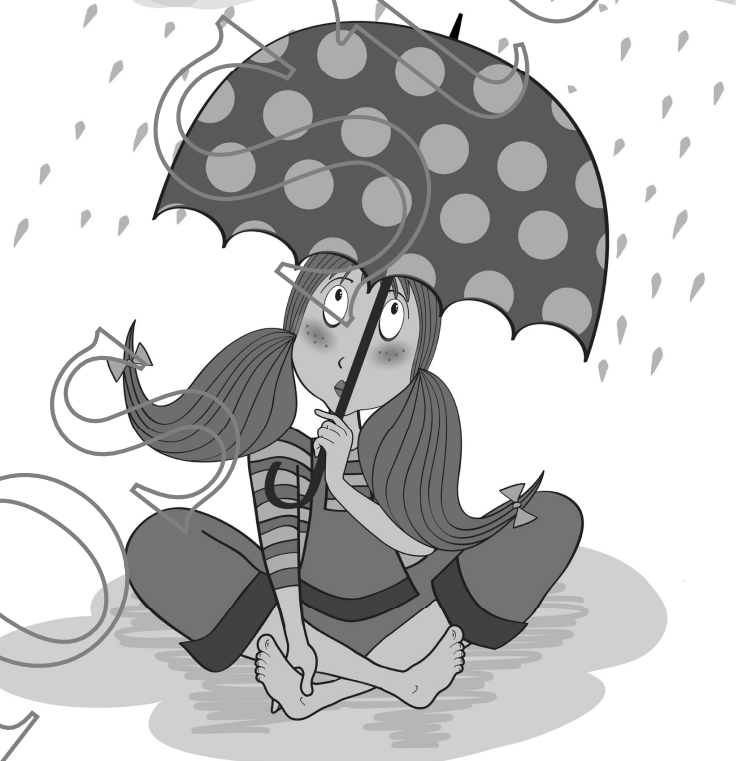
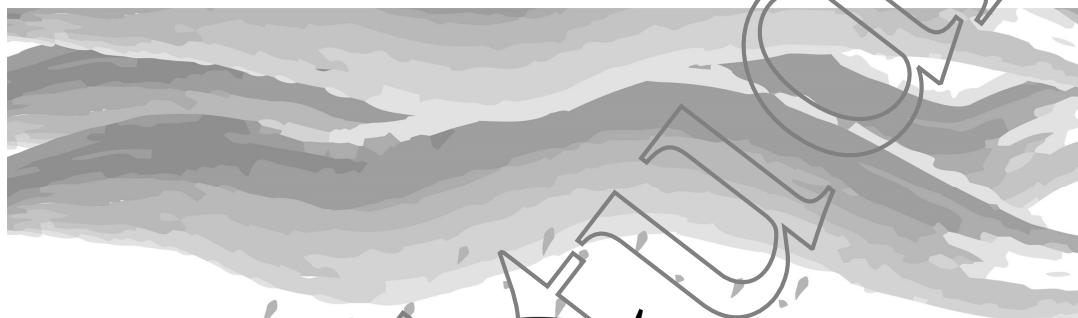
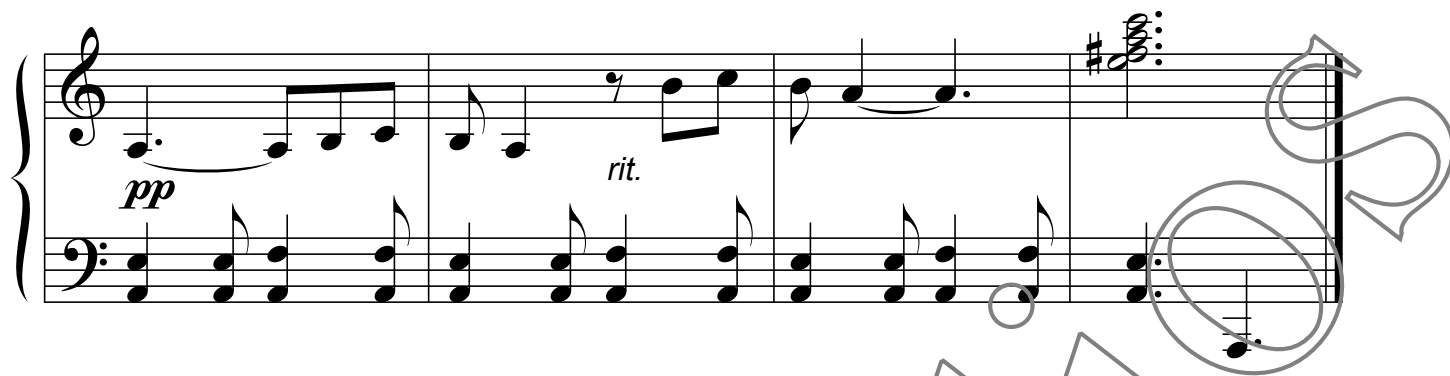
mp

This system contains measures 9 through 12. The treble clef part has a half note G5, followed by quarter notes F5, E5, and D5. The bass clef part continues with eighth notes. A fingering of 1 is shown for the first note.

1

p

This system contains measures 13 through 16. The treble clef part features a half note G5, followed by quarter notes F5, E5, and D5. The bass clef part continues with eighth notes. A fingering of 1 is shown for the first note.



K